

## QuickStart Guide for notation musician

This Quickstart Guide is designed for those who want pointers, and then want to explore for themselves.

For a more "hands on" approach, you may want to check out the "[Quick Start Tutorial](#)" which works step-by-step through some of the more common tasks. There are also [Tutorial Videos](#) available to guide you through many tasks.

**Back up your software** (*full version only*) – Before anything else, please take a moment to back up your installation. The installation is saved in the zip file "Inst\_NS\_Musician\_3\_English\_Backup\_xyz.zip" (xyz = version), which you can find at

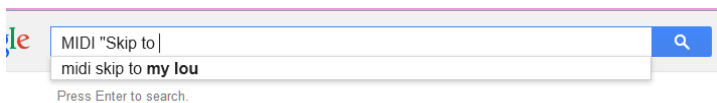
Windows Vista, 7, 8, 8.1, 10: C:\Users\Public\Documents\Notation\_3\Musician\_3\Installation  
Windows XP: C:\Programs\Notation\_3\Musician\_3\Installation  
and in the folder where you have started the installation.

Copy this zip file to some safe storage media (e.g. CD, memory stick, external hard drive, etc.) If you should need to reinstall your software for any reason, simply extract the zip file into one folder of computer hard drive, and then run the file "Installation\_Notation\_Musician\_3\_English.msi".

**Opening a file from your computer** – simply use "Open" or "File/Open" and navigate to your file.

### Finding MIDI or Karaoke Files

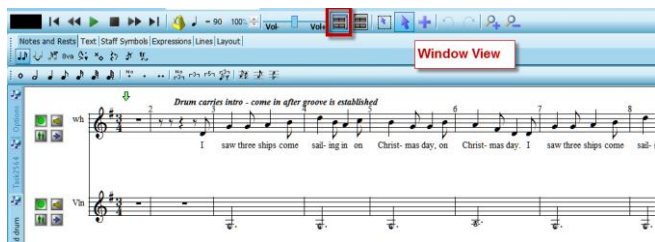
You can use "File/Download files from the internet" to find a directory of websites that host MIDI files, or your browser and favorite search engine to look for "MIDI" plus the name of a song you would like to work with.



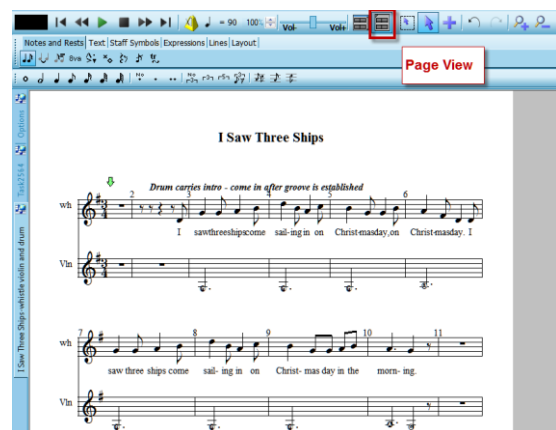
Save the file to your hard drive, and open it in notation musician using "Open" or "File Open."

### Setting up your Work Space

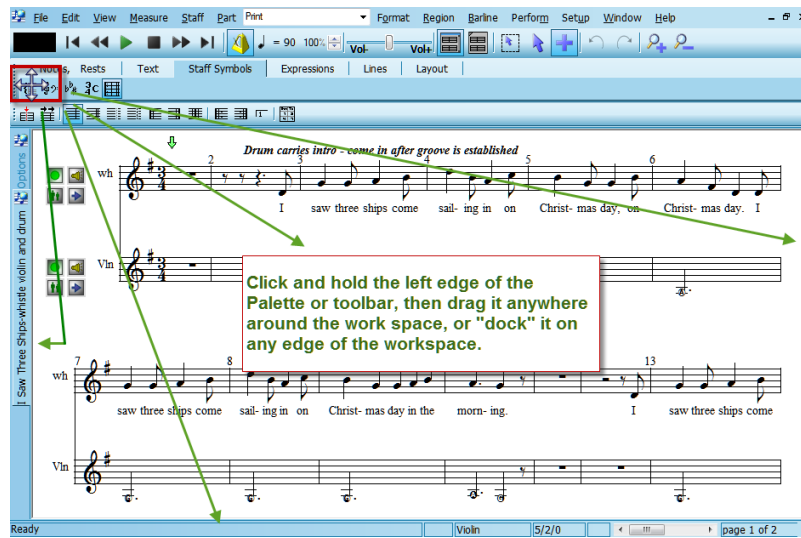
**Window view** (allows easy muting, soloing, Staff Setup using Staff control buttons) or **Page view** ("Print preview")



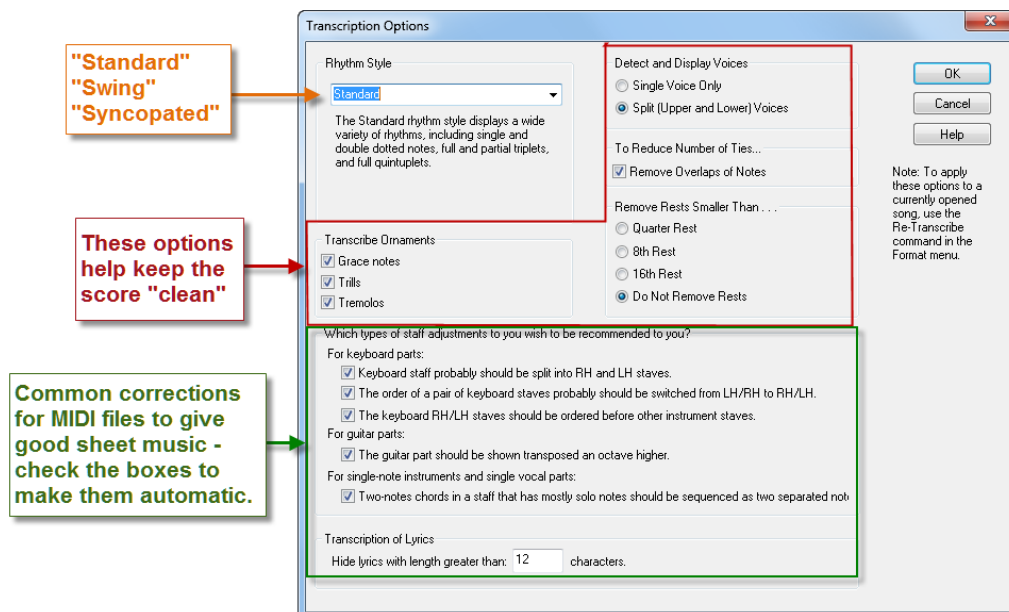
OR



The Main Palette (Tabs and Palettes) and Detail Palette (Palette tools) can be moved for your convenience (only available on Windows).



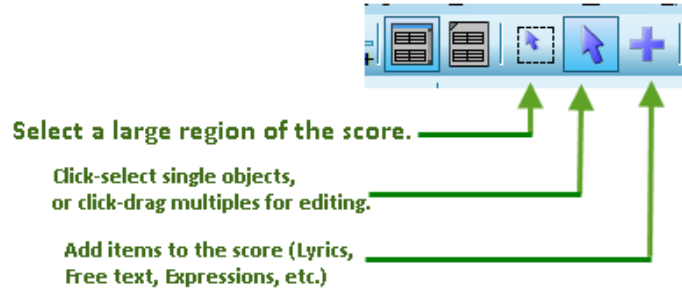
**Transcription Options** - Setup/Transcription Options affects the appearance of the notation.



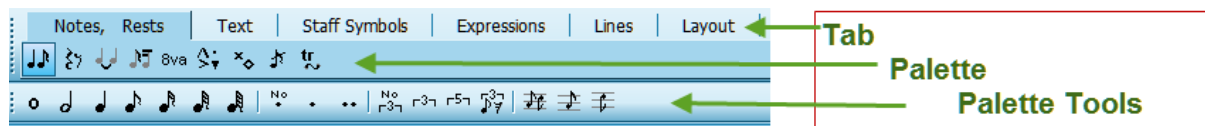
If you don't like how the notation looks after opening a new file, try different options by using Format/Retranscribe.

## Adding to or Editing the Score

**Modes** – Add, Select, or Region Select



## Tabs, Palettes, and Tools



Clicking on an element in the score (eg. a note or key signature) will open the relative tab and palette, with the tools to work on what you have selected. **musician** automatically puts you in the proper mode.

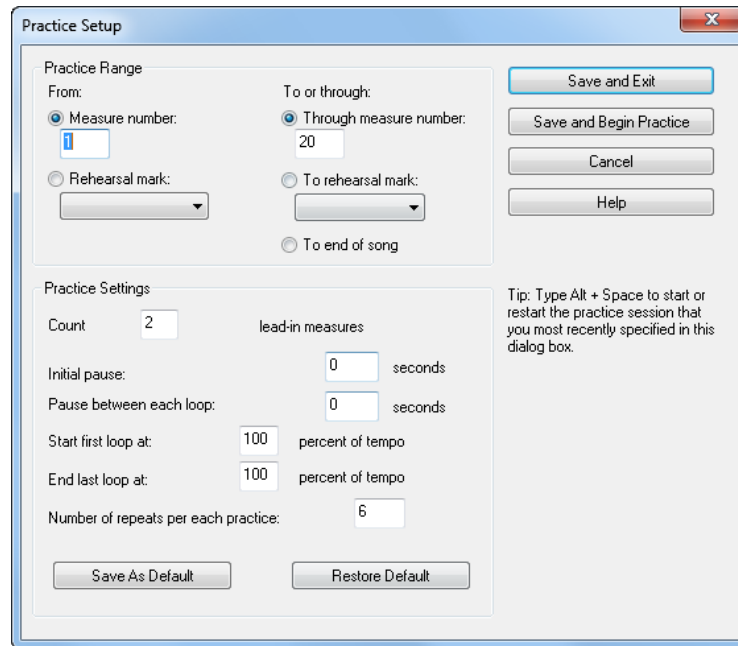
Clicking on the Tab, Palette, and Tool for an item while in "Add" mode (eg. "Text/Lyrics", or "Notes and Rests/Accents") allows you to add that element to the score.

## Practicing

**Staff Controls-** Use the staff control buttons to silence or solo each staff.

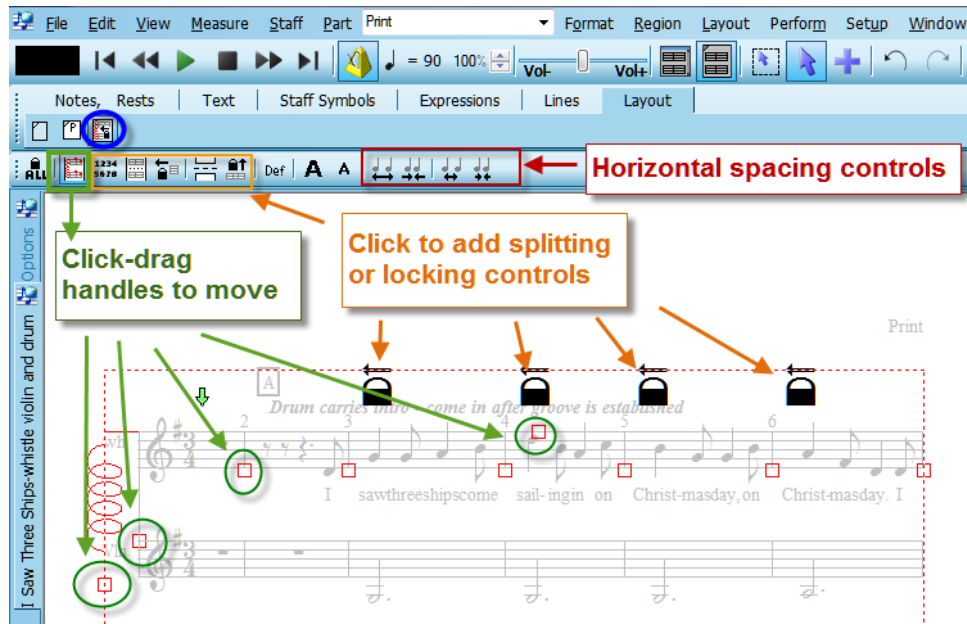


**Practice Sessions** – Perform/Practice Setup for practice loop options.



## Printing – Layout and Formatting

**Layout/Page Layout** – Tab, Palette and tools for editing the position of bars and systems (“lines”) of the score on the page(s).



**Format menu commands** – A centralized list of commands and dialogs for other aspects of the appearance such as the Transcription options, fonts, and hiding/showing types of objects in the score.

For details about any of these, you can see Help/Users Guide, and then use the Index to look up any topic for step-by-step instructions.

We hope you will enjoy many hours of music making fun with [notation musician!](#)

Your Notation Software Team